

CHILD RESTRAINT SYSTEM INFORMATION

MODEL **80-0301/80-0302**
(S+ Isofix)

GROUP **0+ / 1 / 2**

BRAND **CROLLA**



0090063

UNR TESTING INFORMATION

Regulation	ECE R44/04
Approval Number	E4-44R-044587 / E4-44R-044593
CTA Reference Number	JPJ.BKA.600-3/3/33 Jld48(10)
CTA Approval Date	11 DECEMBER 2019

INSTALLATION TYPE

Installation Type/ Direction	Seatbelt	ISOFIX	Top Tether	Support Leg
Rear Facing	✓	N/A	N/A	N/A
Forward Facing	✓	✓	✓	N/A

PHOTOS



CHILD RESTRAINT SYSTEM INFORMATION

COLOUR VARIANT

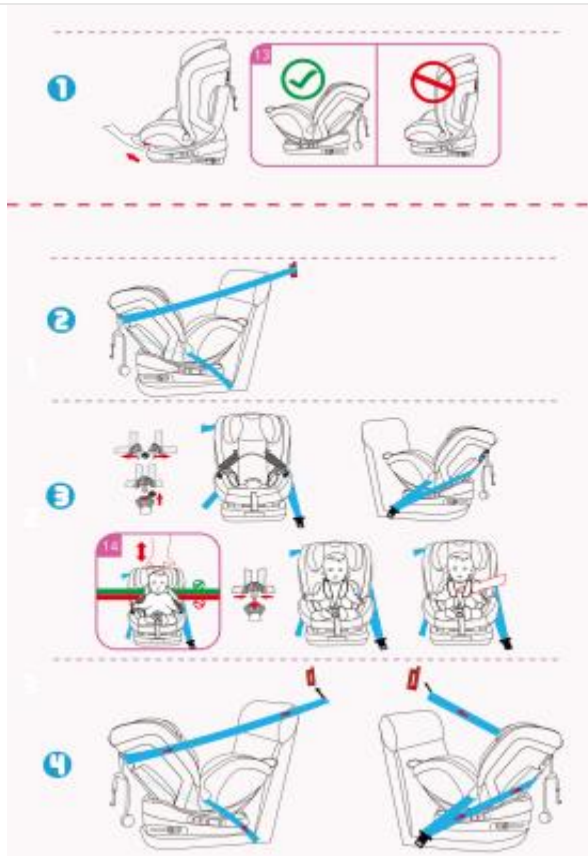


INSTALLATION

Group

Installation Method

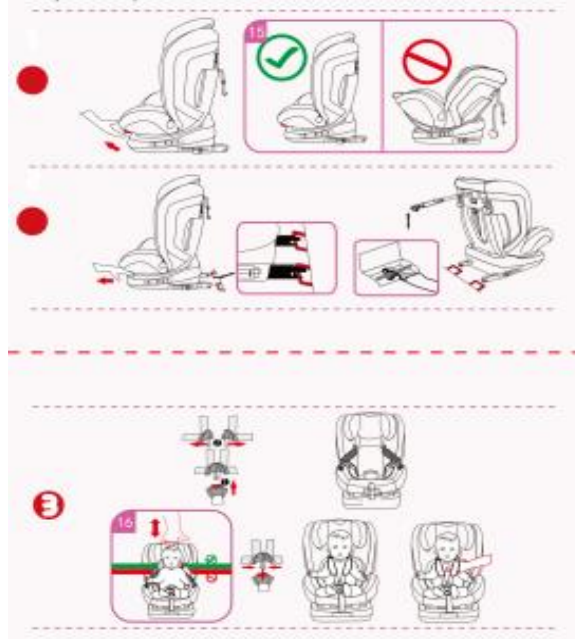
0/0+
Up to 83cm
0-13kg



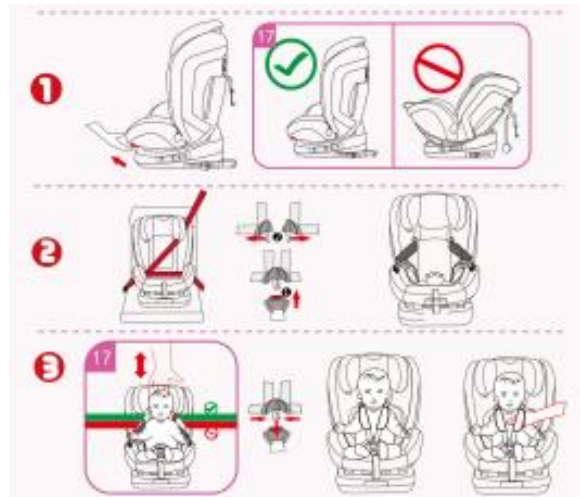
CHILD RESTRAINT SYSTEM INFORMATION

1

71cm and above
9-18kg



OR



2

100cm and above
15-25kg

