

CHILD RESTRAINT SYSTEM INFORMATION

MODEL 80-0201 (S Spin)

GROUP 0+ / I / 2

BRAND CROLLA



0090061

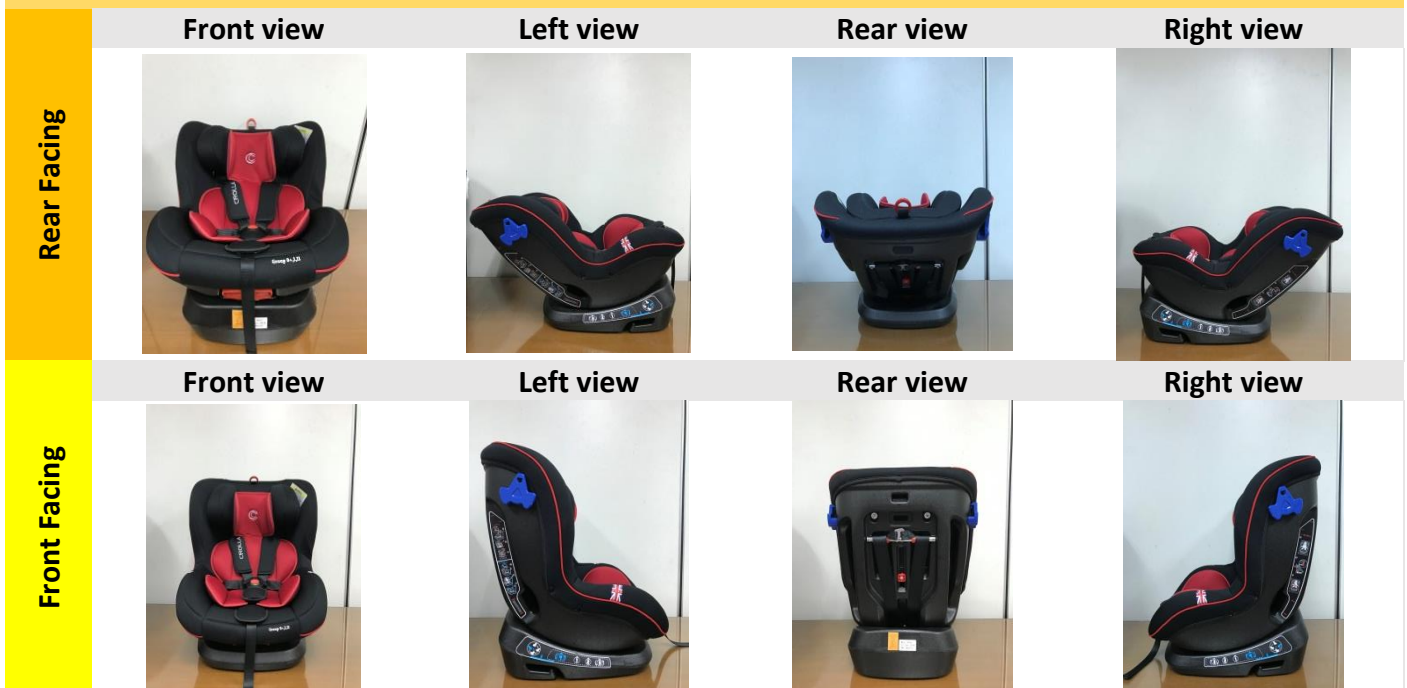
UNR TESTING INFORMATION

Regulation	ECE R44/04
Approval Number	E4-44R-044543
CTA Reference Number	JPJ.BKA.600-3/3/33 Jld48(10)
CTA Approval Date	11 DECEMBER 2019

INSTALLATION TYPE

Installation Type/ Direction	Seatbelt	ISOFIX	Top Tether	Support Leg
Rear Facing	✓	N/A	N/A	N/A
Forward Facing	✓	N/A	N/A	N/A

PHOTOS



CHILD RESTRAINT SYSTEM INFORMATION

COLOUR VARIANT

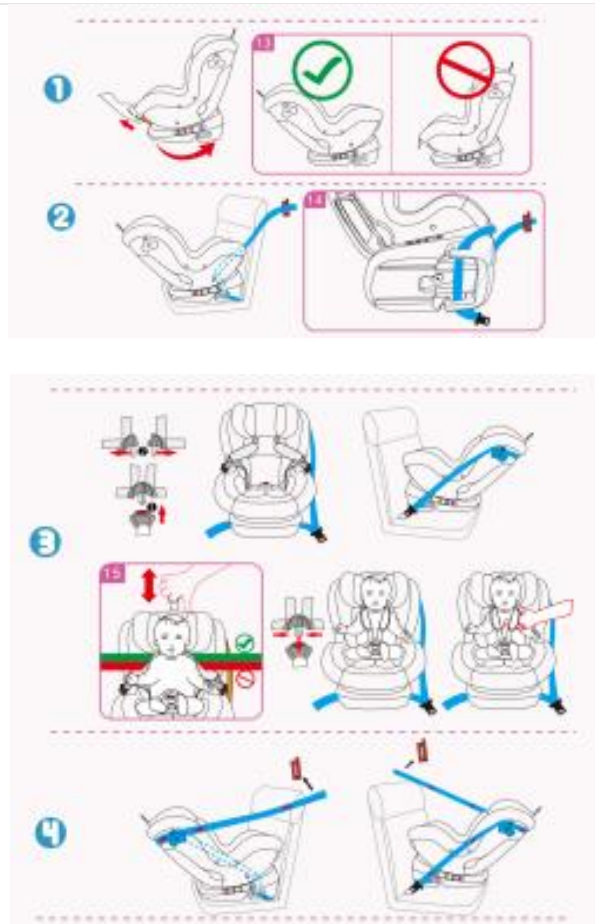


INSTALLATION

Group

Installation Method

0/0+
Up to 83cm
0-13kg

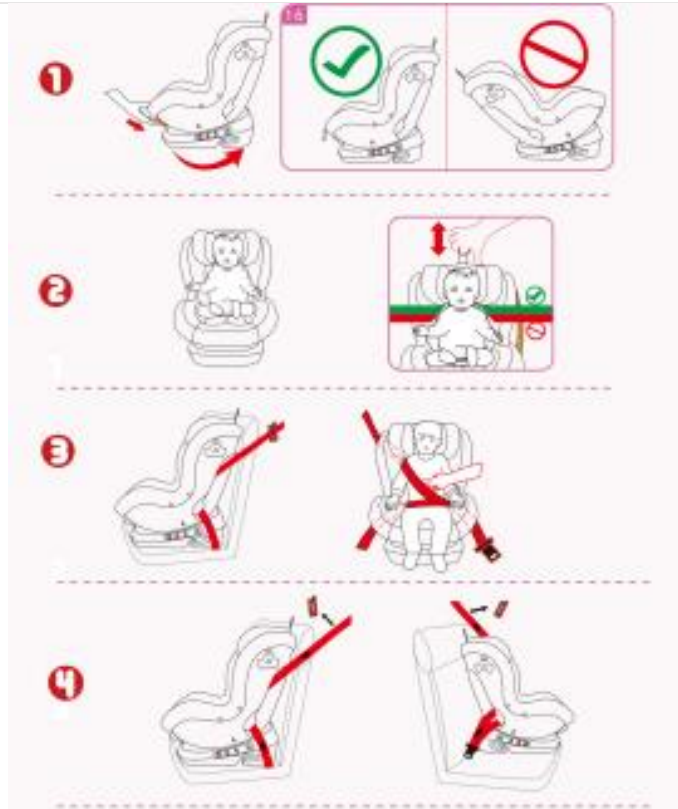


CHILD RESTRAINT SYSTEM INFORMATION

1
71cm and above
9-18kg



2
100cm and above
15-25kg



3
Up to 135cm
22-36kg

N/A