

CHILD RESTRAINT SYSTEM INFORMATION

MODEL **EZZY i-SIZE (AY329)**

GROUP **40cm – 87cm**

BRAND **CROLLA**



0090513





UNR TESTING INFORMATION

Regulation	R129
Approval Number	E8*129R03/07*14071*00
CTA Reference Number	JPJ.BKA.600-3/3/33 Jld 287(87)
CTA Approval Date	11 SEPTEMBER 2023

INSTALLATION TYPE

Installation Type/ Direction	Seatbelt	ISOFIX	Top Tether	Support Leg
Rear Facing	✓	N/A	N/A	N/A
Forward Facing	N/A	N/A	N/A	N/A

PHOTOS

	Front view	Left view	Rear view	Right view
Rear Facing				
Forward Facing	N/A	N/A	N/A	N/A

CHILD RESTRAINT SYSTEM INFORMATION

COLOUR VARIANT



Mystic Gold



Pebble Grey

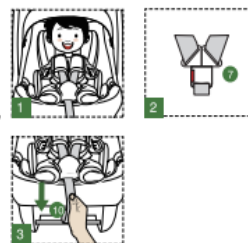
INSTALLATION

Group

Installation Method

40 cm – 87 cm
Up to 13kg

FIRST ►



step1: Place the baby into the infant carrier;

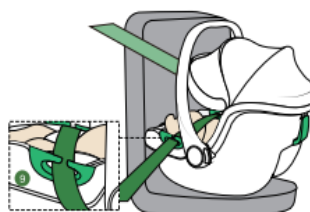
step2: lock the buckle ⑦ ;

Step3: Tighten the harness adjuster strap (10) then put the infant carrier in rear facing on the passenger rear seat.

* Ensure the infant carrier to be in close contact with the vehicle seat backrest (please refer to the precautions before installation for details)

SECOND ►

— shoulder straps
— lap straps



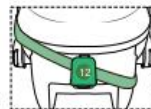
left view

Pull out the adult three-point seat belts and pass the lap strap through the side guides on the left and right sides of the infant carrier.

09 110 ■



left view



Pull up the shoulder strap, wind it into the rear guide (12) behind the infant carrier and then adjust the adult three-point belt to ensure that it is tightened.



right view



When using the child restraint system, it is important to confirm that the buckle of the adult three-point belt does not interfere with the main load-bearing contact point of the child restraint system. If there is any doubt or uncertainty, please contact the manufacturer of the child restraint system for further guidance or assistance.

FINALLY ►



right view

Keep the infant carrier stable, press the handle adjustment buttons on both sides of the infant carrier using both hands, and move it forward to position 1, ensuring that the handle is just against the seat.

⚠ Ensure that the seat belt is not twisted. While prioritizing the child's comfort, tighten the seat belt as much as possible.