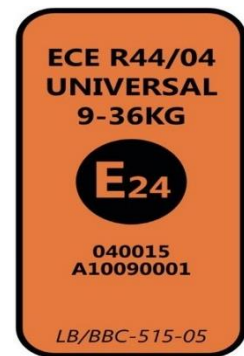


CHILD RESTRAINT SYSTEM INFORMATION

MODEL **MAX (VARICH)**

GROUP **I / II / III**

BRAND **CROLLA**



0090523

UNR TESTING INFORMATION

Regulation	ECE R44/04
Approval Number	E24*44R04/07*0015*08
CTA Reference Number	JPJ.BKA.600-3/3/33 Jld 292(100)
CTA Approval Date	18 OCTOBER 2023

INSTALLATION TYPE

Installation Type/ Direction	Seatbelt	ISOFIX	Top Tether	Support Leg
Rear Facing	N/A	N/A	N/A	N/A
Forward Facing	✓	N/A	N/A	N/A

PHOTOS

	Front view	Left view	Rear view	Right view
Rear Facing	N/A	N/A	N/A	N/A
Forward Facing				

CHILD RESTRAINT SYSTEM INFORMATION

COLOUR VARIANT



Shine Gold

INSTALLATION

Group

Installation Method

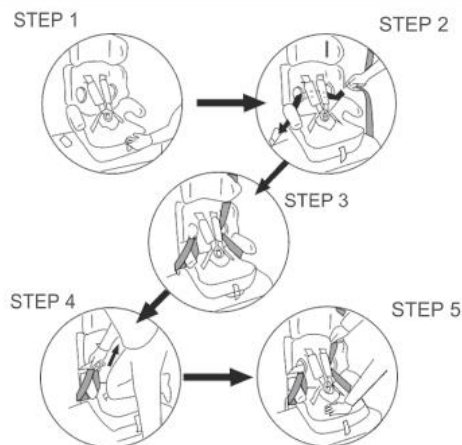
0/0+

Up to 83cm

0-13kg

N/A

**FITTING THE SEAT WITH THE 3-POINT LAP & DIAGONAL SEAT BELT 9-18kg
(approx. 1 year to 4 years)**



Step 1 : Place the child safety seat on the vehicle's seat.

Step 2 : Put the seat belt into the slot with red label on the backrest of the car seat. Then, pull the seat belt out through the other slot with red label at the other side and fasten it into the seat belt buckle.

Step 3 : Ensure the seat belt is not twisted or tangled. Confirm that the lap belt goes under the armrest and the diagonal belt is passing under the headrest belt guide.

Step 4 : Place your knee on the base of the safety seat and grip the upper part of the seat belt. Pull the seat belt upwards to tighten it.

Step 5 : Finish tightening of the seat belt by pulling the diagonal strap upwards until there is no slack and the seat is securely in position. You can now buckle your child into the seat.

Ensure the seat belt is not twisted and check that the cover is not affecting the movement or proper fit of the seat belt in any manner.

To release your child seat, follow the instructions above in the reverse sequence.

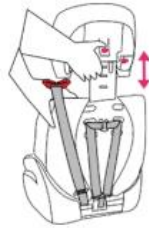
1

71cm and above

9-18kg

CHILD RESTRAINT SYSTEM INFORMATION

ADJUST THE HEADREST HEIGHT 15-25kg (approx. 3 years to 12 years)



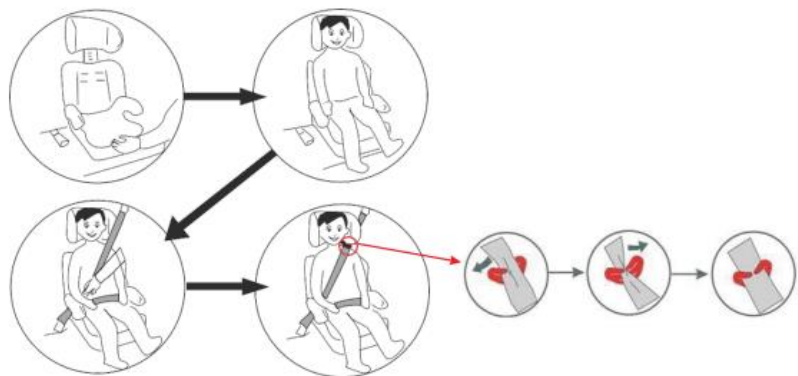
According to children's different height, the headrest can be adjusted up and down.

Step 1 : Put your left (or right) hand on the back of the headrest.

Step 2 : Press the headrest button and pull up the headrest.

Step 3 : Make sure that the headrest position fits for your child.

FITTING THE CAR SEAT USING THE BELT LOCK



IMPORTANT:

Before installing the seat, remove the shoulder straps, crotch strap and lap straps. Then, fit the seat belt as shown in the instructions.

Step 1 : Place the child safety seat on the vehicle's seat.

Step 2 : Position the child in the child safety seat with the seat belt lock over the child's shoulder.

Step 3 : Put the diagonal part of the seat belt through the seat belt lock (refer to the section on fastening the seat belt lock).

Step 4 : Buckle the seat belt, ensuring the lap belt passes under both armrests, and the diagonal belt goes under the armrest. Confirm that the seat belt isn't twisted and tighten the seat belt by pulling the diagonal strap upward.

Ensure the seat belt is not twisted and check that it is not affecting the movement or proper fit of the seat belt in any manner.

To release your child, unfasten the seat belt in the normal way.

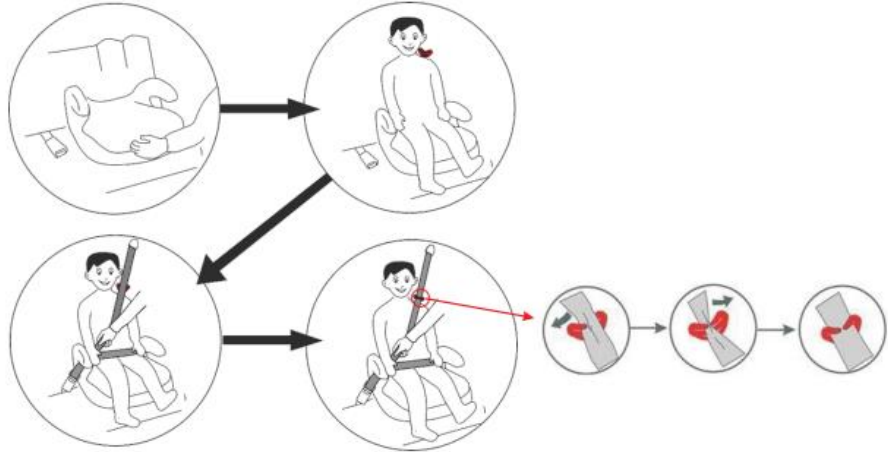
2

100cm and above
15-25kg

CHILD RESTRAINT SYSTEM INFORMATION

3
Up to 135cm
22-36kg

FITTING THE BOOSTER SEAT WITHOUT BACKREST USING THE SEAT BELT LOCK 22-36kg (approx. 3 years to 12 years)



Step 1 : Remove the backrest and place the booster seat on the vehicle's seat.

Step 2 : Place the child in the booster seat.

Step 3 : Buckle the seat belt, ensuring the lap belt passes under both armrests, and the diagonal belt goes under the armrest. Confirm that the seat belt isn't twisted and tighten the seat belt by pulling the diagonal strap upward.

Step 4 : Remember to check the seat belt to ensure there is no looseness and the belt is not twisted.

Ensure the seat belt is not twisted and check that it is not affecting the movement or proper fit of the seat belt in any manner.

To release your child, unfasten the seat belt in the normal way.