

CHILD RESTRAINT SYSTEM INFORMATION

MODEL **MK688FIX (ATHENA)**

GROUP **0+ / I / II**

BRAND **MEINKIND**



0140300

UNR TESTING INFORMATION

Regulation	ECE R44/04
Approval Number	048806
CTA Reference Number	JPJ.BKA.600-3/3/33 Jld 61 (20)
CTA Approval Date	2020

INSTALLATION TYPE

Installation Type/ Direction	Seatbelt	ISOFIX	Top Tether	Support Leg
Rear Facing	✓	N/A	N/A	N/A
Forward Facing	✓	✓	✓	N/A

PHOTOS

	Front view	Left view	Rear view	Right view
Rear Facing				
Forward Facing				

CHILD RESTRAINT SYSTEM INFORMATION

COLOUR VARIANT



INSTALLATION

Group

Installation Method

0/0+
Up to 83cm
0-13kg



IMPORTANT - DO NOT USE FORWARD FACING BEFORE THE CHILD'S WEIGHT EXCEEDS 9KG (Refer to instructions)

4.1 Height adjustment of the headrest and harness' shoulder belts



Firstly, keep pressing the adjusting device by one hand, meanwhile, pull out the 2 shoulder belts by the other hand, then you can loosen the 5-point harness (4.1A). After that, hold the top of headrest and pull forward a little bit, slant it, then you can move it up and down (4.1B). When you adjusting the headrest, the height of shoulder belts will move accordingly, please adjust the height of headrest and shoulder belts to proper height (4.1C).

4.2 Child seat installation

Step 1: Adjust the child seat to 2nd position (refer to label near the guiding hole for lab belt), and open the height-increasing board of the base (4.2A), put the child seat rearward facing the car seat, and contact closely against car seat (4.2B).

Step 2: Pull out the vehicle safety belt, pass the lap belt through the guiding hook which is under the child seat (4.2C), then threading-out from the other guiding hook of other side, fasten the buckle (4.2E). Open 2 shoulder tape clips on the child seat, put the diagonal belt into the diagonal belt guiding hole, and lock the tape clips, the headrest should be surrounded by diagonal safety belt (4.2D).

Step 3: Tighten and straighten the vehicle belt. Ensure the seat is securely install (4.2F). Carry out the operations described above in reverse order to take out the child seat, and ensure all parts of vehicle safety belt installed tightly. Make sure the belts installed correctly and is not twisted. Check the cover if fit with the child seat or not. Child seat inner pad is only used for child within one year old.



4.3 Release the 5-point harness



- Keep pressing the safety belt adjuster by one hand.
- Use the other hand pull out the shoulder belts, then you can release 5-point harness (see figure on the left).



- First, adjust the height of shoulder belt (see 4.1).
- Release 5-point harness (see 4.3), open the child seat belt buckles (see 4.5), put them on the both sides.
- Sit your child in the child seat, place the shoulder belts on child's shoulders.
- Fasten the child seat buckle.
- Pull the seat's harness tight, reduce the looseness of waist part of belts, by pulling the adjuster belt until it tight.
- Pull the adjuster belt as tight as possible under the premise of comfortably of your child.
- The loosened belts are very dangerous. Please check the adjuster belt and tighten the harness belt before use it every time.

Ensure that the base of child seat is contacted with vehicle seat closely, and the safety belts are not twisted.

4.5 How to use the harness buckle

- Put 2 clips of the harness strap together. (see 4.5A)
- Insert clips into the buckle until you hear a clicking sound. (see 4.5B)
- Lift the shoulder belts, check if the buckle is fastened correctly or not. (see 4.5C)
- Press the red button of buckle in order to release it.



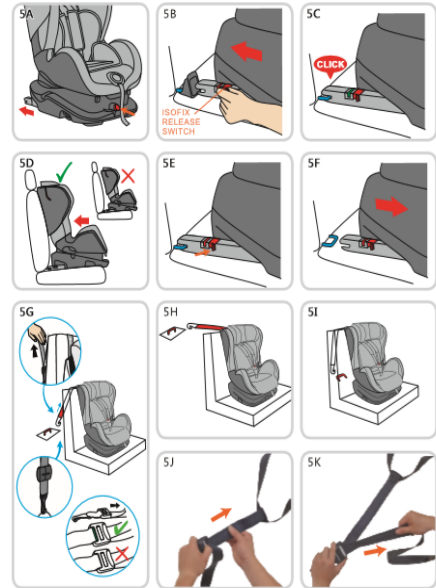
CHILD RESTRAINT SYSTEM INFORMATION

1

71cm and above
9-18kg

Step 1: Adjust the child seat to 2nd position.
Step 2: Keep pressing the ISOFIX adjusting switch, in the meantime, pull the ISOFIX connectors to the maximum extending position (5A). If you want to push ISOFIX connectors back to seat base, perform the operations oppositely.
Step 3: Place the child car seat on vehicle seat, hold two ISOFIX RELEASE SWITCHES in each side with hands, push to connect to the ISOFIX anchorage connectors (5B), when you hear a clear 'click', the ISOFIX is connected safely. the ISOFIX indicator will turn to green (5C). You need to keep pushing the child car seat towards the vehicle seat hardly in order that the child seat can be aligned with vehicle seat closely (5D).
 If you want to remove, only need to turn the ISOFIX RELEASE SWITCH, when hearing a clear 'click', the ISOFIX connector is released, the indicator turns red. (5E,5F)
Step 4: Connect the top tether to the vehicle connecting point, keep pressing the top tether adjusting device by one hand and pull the strap by the other hand until the top tether adjusting device turns green (5G-5K). If you want to release the top tether, perform the operations oppositely.
 Please check after installation, if:

- ISOFIX connectors are inserted into the ISOFIX anchorage system of vehicle seat correctly, and child car seat is aligned and touches the backrest of the vehicle seat.
- The child car seat is not loose when vigorously pulled left and right, in the direction of travel.



Remove the 5-point harness if your child's weigh between 15 and 25kg(see 6.1). The product only suitable if the vehicle is approved and equipped with a 3-point safety belts. For installation, 3 point safety belt and additional attachments shall be used.

6.1 Removing the 5-point harness

- Release the harness (see 4.3) and move it to the back of child seat.
- Find the harness connector from behind, take out the belt from harness connector (6.1A).
- Push down 2 holes a little bit and pull out, then you can open the back cover (6.1B).
- Take out 2 belts from the slot (6.1C).
- Pull out the metal bar, take out 2 fixing straps of shoulder belts (6.1D).
- Pull out 2 metal plates from guiding holes of both sides, then remove it (6.1E).
- Find out the connector under buckle of child seat, take out a metal plates from the fixing hole, then remove it from strap (6.1F).



Remove the harness after the operations mentioned above. 6.1G show that the child seat after removing the harness. Place all parts of 5-point harness in a safe place for future use. Carry out the operation described above in reverse order to install the harness.

6.2 Installed by vehicle safety belt

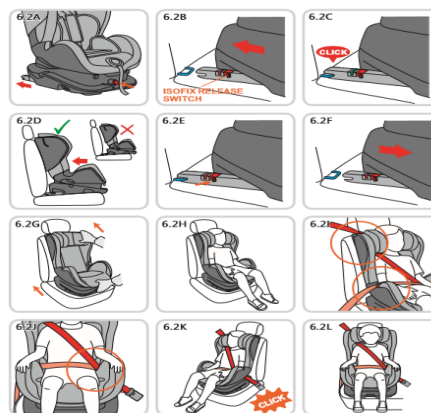
Only can be installed by 3-point safety belt in vehicle for child between 3 and 8 years old. And the 5-point harness must be removed (refer to 6.1).

Step 1: Adjust the child seat to 1st position. Perform the step 2 and step 3 of operations mentioned in item 5 (6.2A - 6.2F).

Step 2: Sit your child in child seat (6.2G, 6.2 H).

Step 3: Pull out the 3-point vehicle safety belt, pass the diagonal belt through the area with red circle, and pass vehicle lap belt through above the armrest with red circle (6.2I), then threading through the guiding hole for lab belt (6.2J), fasten the seat belt buckle (6.2K).

Step 4: Ensure the belts are not twisted. Tighten the vehicle seat belt by pulling on the diagonal section, and remove the slack of seat belt to the retractor (6.2L).



3

Up to 135cm
22-36kg

N/A