

CHILD RESTRAINT SYSTEM INFORMATION

MODEL **C1801(i-SPIN 360)**

GROUP **0+ / 1**

BRAND **JOIE**



0260170

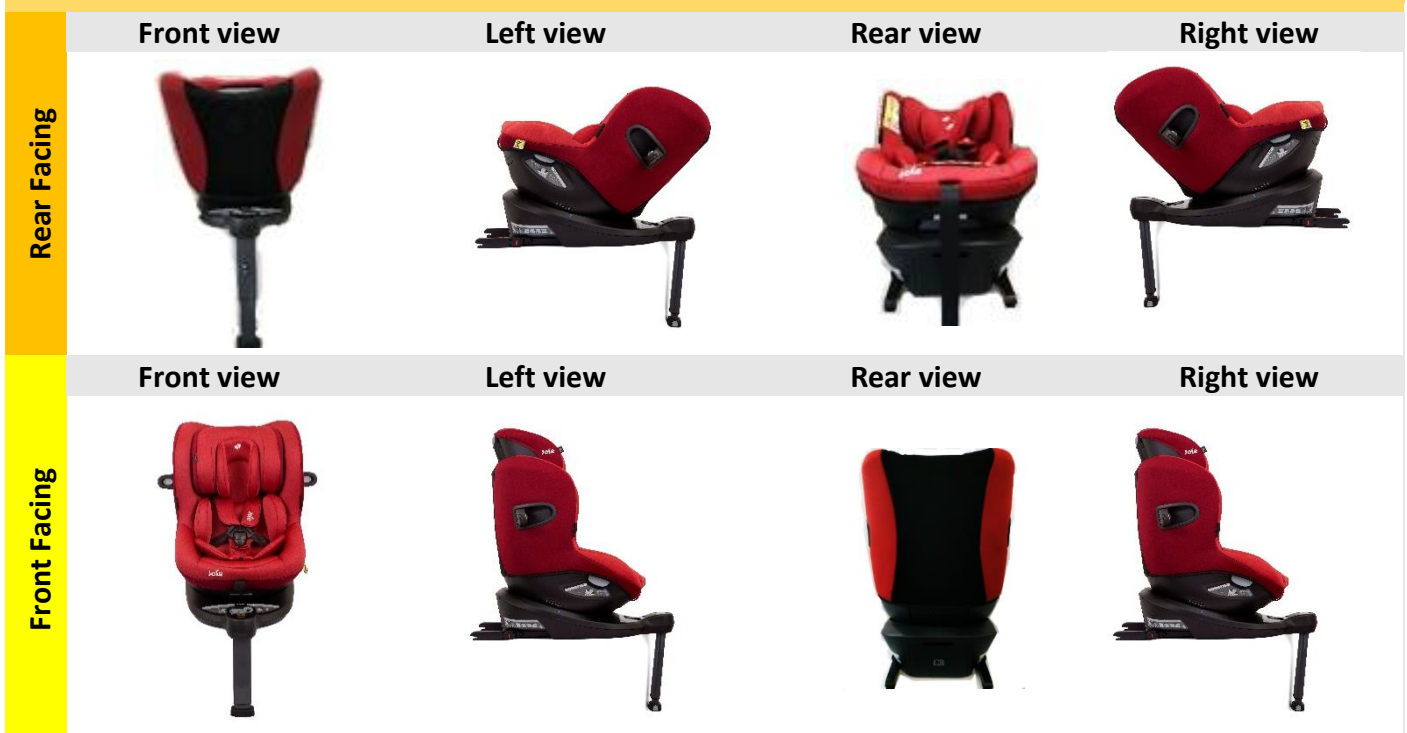
UNR TESTING INFORMATION

Regulation	R129.02
Approval Number	E11*129R02/00*0513*00
CTA Reference Number	JPJ.BKA.600-3/3/33 Jld 57(12)
CTA Approval Date	14 JANUARY

INSTALLATION TYPE

Installation Type/ Direction	Seatbelt	ISOFIX	Top Tether	Support Leg
Rear Facing	N/A	✓	N/A	✓
Forward Facing	N/A	✓	N/A	✓

PHOTOS



CHILD RESTRAINT SYSTEM INFORMATION

COLOUR VARIANT



Merlot



Coal

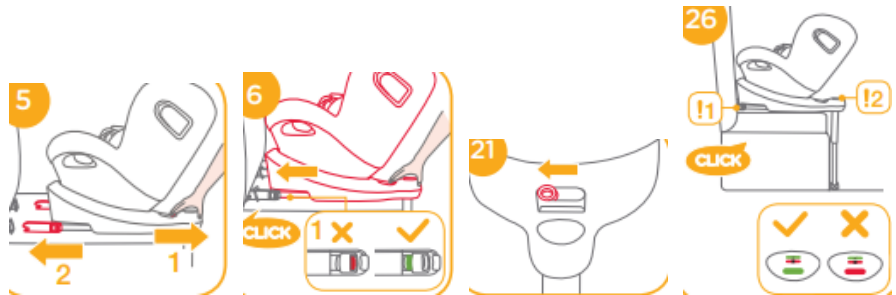
INSTALLATION

Group

Installation Method

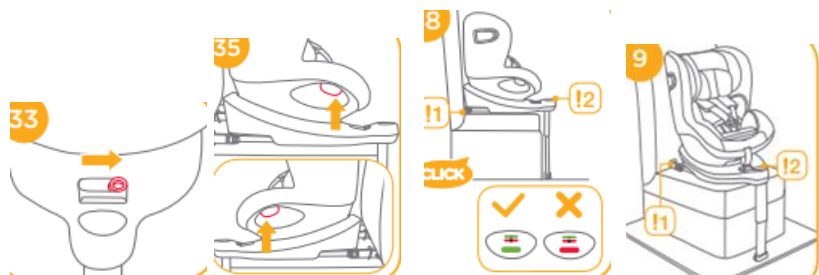
0/0+
Up to 83cm
0-13kg

Installed rear facing with isofix and load leg 40-105cm, 0-19kg



1
71cm and above
9-18kg

Installed forward facing after 15 months, 76-105cm, ≤ 19kg



2
100cm and above
15-25kg

N/A

3
Up to 135cm
22-36kg

N/A