

CHILD RESTRAINT SYSTEM INFORMATION

MODEL **C1719 (STAGES FX)**

GROUP **0+ / 1 / 2**

BRAND **JOIE**



0260172

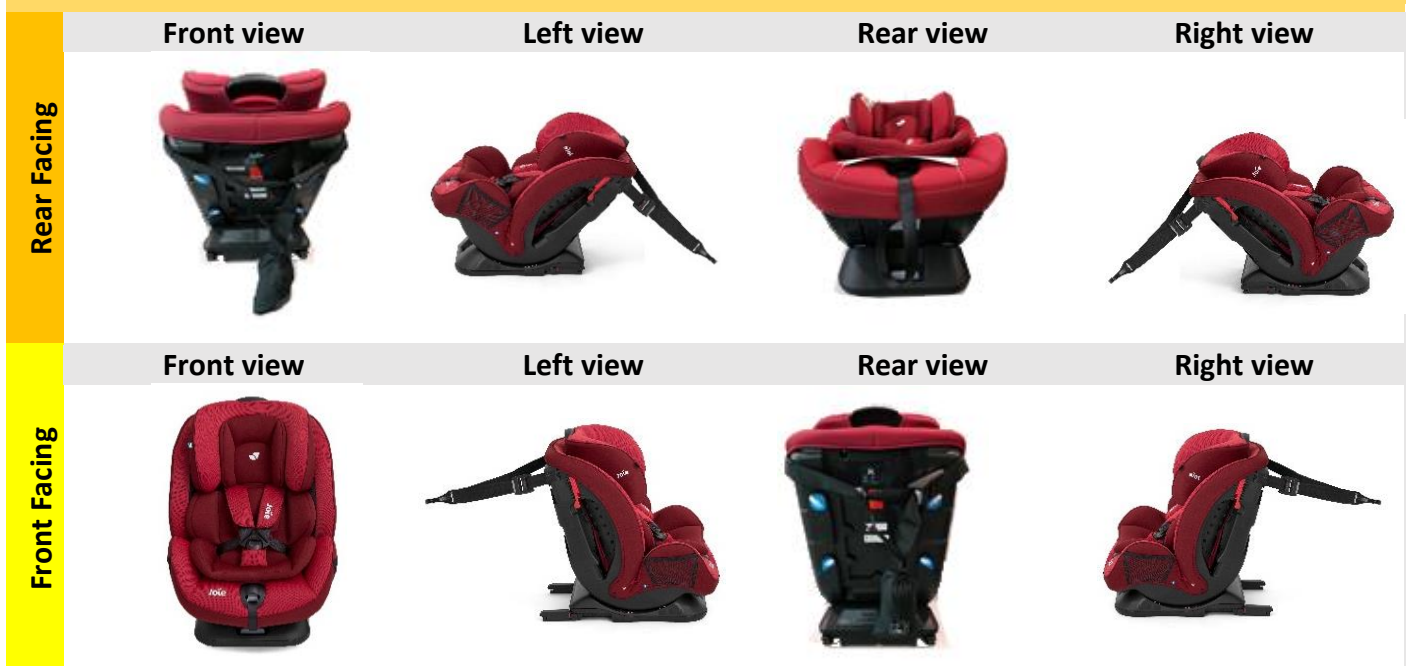
UNR TESTING INFORMATION

| | |
|----------------------|-------------------------------|
| Regulation | ECE R44/04 |
| Approval Number | E11*44R04/12*1654*00 |
| CTA Reference Number | JPJ.BKA.600-3/3/33 Jld 57(12) |
| CTA Approval Date | 14 JANUARY 2020 |

INSTALLATION TYPE

| Installation Type/ Direction | Seatbelt | ISOFIX | Top Tether | Support Leg |
|------------------------------|----------|--------|------------|-------------|
| Rear Facing | ✓ | N/A | N/A | N/A |
| Forward Facing | ✓ | ✓ | ✓ | N/A |

PHOTOS



CHILD RESTRAINT SYSTEM INFORMATION

COLOUR VARIANT



Lychee



Ember

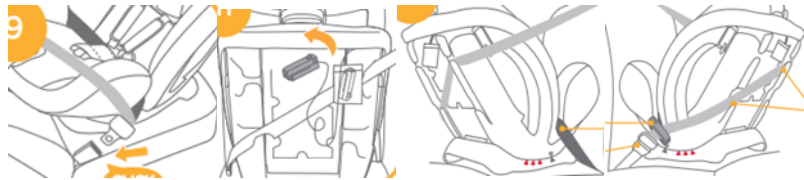
INSTALLATION

Group

Installation Method

0/0+
Up to 83cm
0-13kg

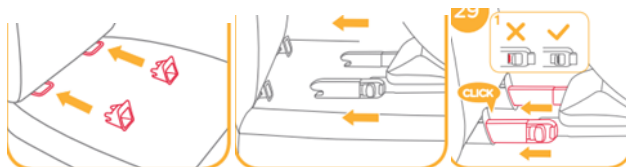
Installed rear facing with vehicle 3-point belt and locking clip.



Installed forward facing with vehicle 3-point belt and lock off



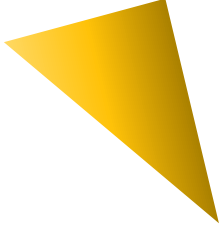
Installed forward facing with isofix and top tether



1
71cm and above
9-18kg

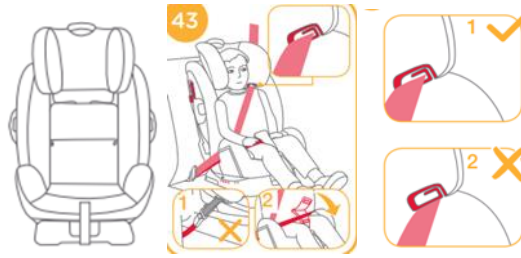


CHILD RESTRAINT SYSTEM INFORMATION

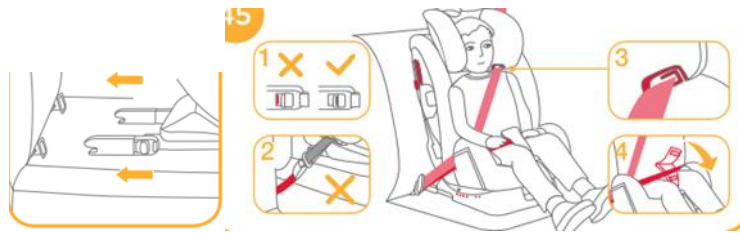


2
100cm and above
15-25kg

Installed forward facing with 3-point belt



Installed with 3-point belt and isofix



3
Up to 135cm
22-36kg

N/A