

# CHILD RESTRAINT SYSTEM INFORMATION

MODEL **C1510 (i-LEVEL SEAT)**

GROUP **0+**

BRAND **JOIE**



0260174





## UNR TESTING INFORMATION

Regulation	R129
Approval Number	129R-010507
CTA Reference Number	JPJ.BKA.600-3/3/33 Jld 57(12)
CTA Approval Date	14 JANUARY 2020

## INSTALLATION TYPE

Installation Type/ Direction	Seatbelt	ISOFIX	Top Tether	Support Leg
Rear Facing	N/A	✓	N/A	✓
Forward Facing	N/A	N/A	N/A	N/A

## PHOTOS

	Front view	Left view	Rear view	Right view
Rear Facing				
Front Facing	N/A	N/A	N/A	N/A

# CHILD RESTRAINT SYSTEM INFORMATION

## COLOUR VARIANT



Gray Flannel



Lychee

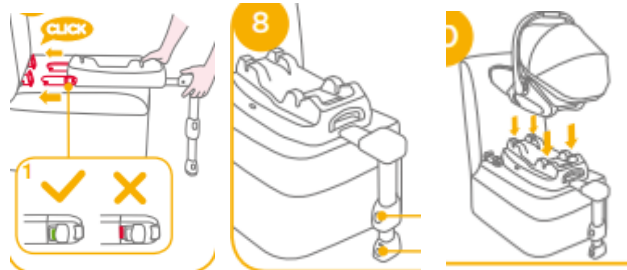
## INSTALLATION

Group

Installation Method

**0/0+**  
Up to 83cm  
0-13kg

Installed rear facing with isofix base with load leg, 40-85cm



**1**  
71cm and above  
9-18kg

**N/A**

**2**  
100cm and above  
15-25kg

**N/A**

**3**  
Up to 135cm  
22-36kg

**N/A**