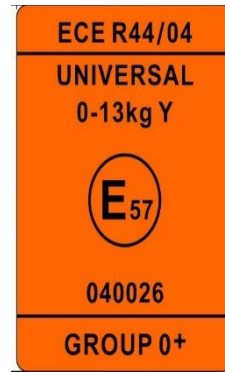


CHILD RESTRAINT SYSTEM INFORMATION

MODEL **D1404 (i-BASE)**

GROUP **0+**

BRAND **JOIE**



0260177





UNR TESTING INFORMATION

Regulation	R129
Approval Number	E11-129R-00 0004
CTA Reference Number	JPJ.BKA.600-3/3/33 Jld 57 (12)
CTA Approval Date	14 JANUARY 2020

INSTALLATION TYPE

Installation Type/ Direction	Seatbelt	ISOFIX	Top Tether	Support Leg
Rear Facing	✓	✓	N/A	✓
Forward Facing	N/A	N/A	N/A	N/A

PHOTOS

	Front view	Left view	Rear view	Right view
Rear Facing				
Front Facing	N/A	N/A	N/A	N/A

CHILD RESTRAINT SYSTEM INFORMATION

COLOUR VARIANT



Black

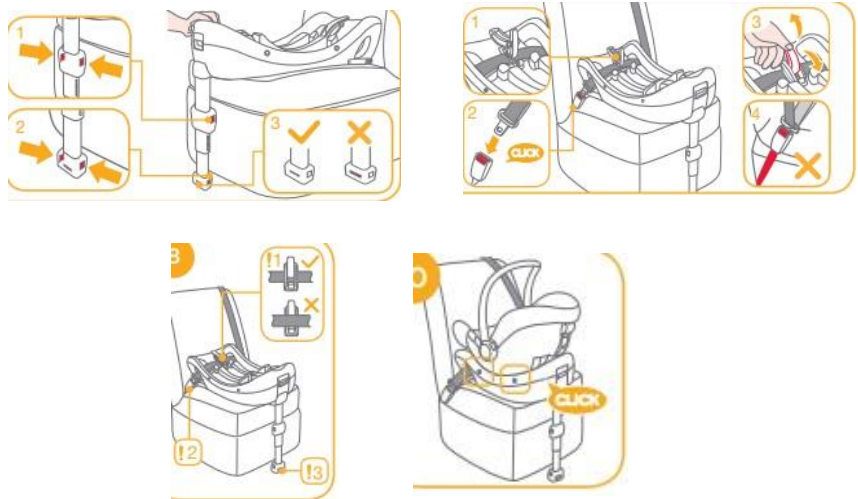
INSTALLATION

Group

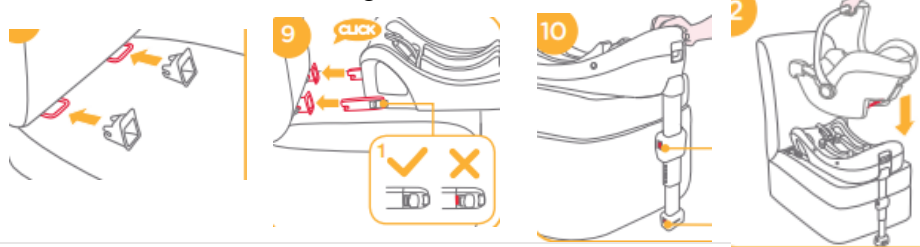
Installation Method

Installed rear facing with 3-point belt 0-13kg

0/0+
Up to 83cm
0-13kg



Installed rear facing with isofix base 40-85cm, 0-13kg



1
71cm and above
9-18kg

N/A

2
100cm and above
15-25kg

N/A

3
Up to 135cm
22-36kg

N/A