

CHILD RESTRAINT SYSTEM INFORMATION

MODEL **C0925 (STAGES)**

GROUP **0+ / 1 / 2**

BRAND **JOIE**



0260178

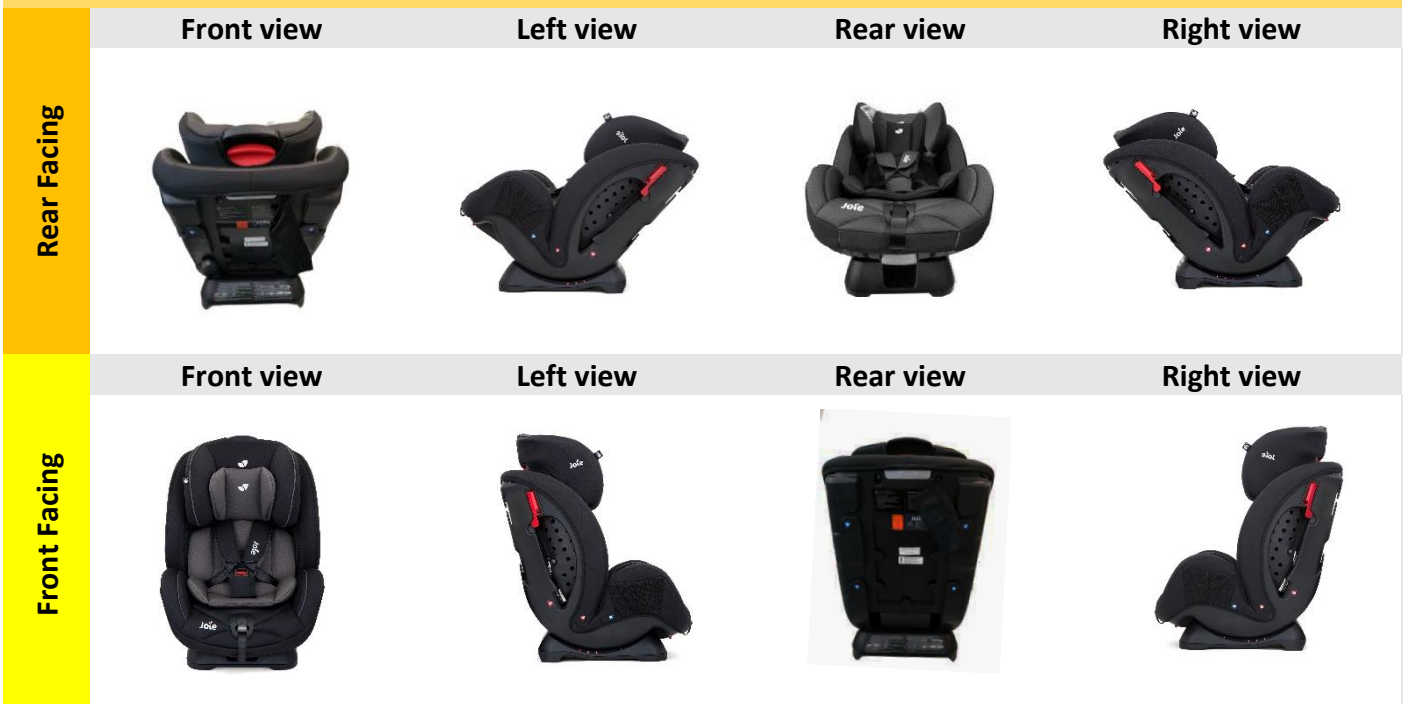
UNR TESTING INFORMATION

Regulation	ECE R44/04
Approval Number	44R-041504
CTA Reference Number	JPJ.BKA,600-3/3/33 Jld (56)(16)
CTA Approval Date	16 JANUARY 2020

INSTALLATION TYPE

Installation Type/ Direction	Seatbelt	ISOFIX	Top Tether	Support Leg
Rear Facing	✓	N/A	N/A	N/A
Forward Facing	✓	N/A	N/A	N/A

PHOTOS



CHILD RESTRAINT SYSTEM INFORMATION

COLOUR VARIANT

Cherry



Coal



Navy Blazer



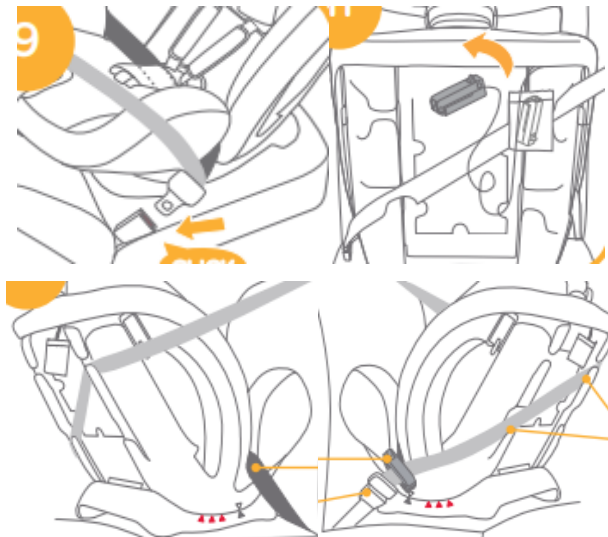
INSTALLATION

Group

Installation Method

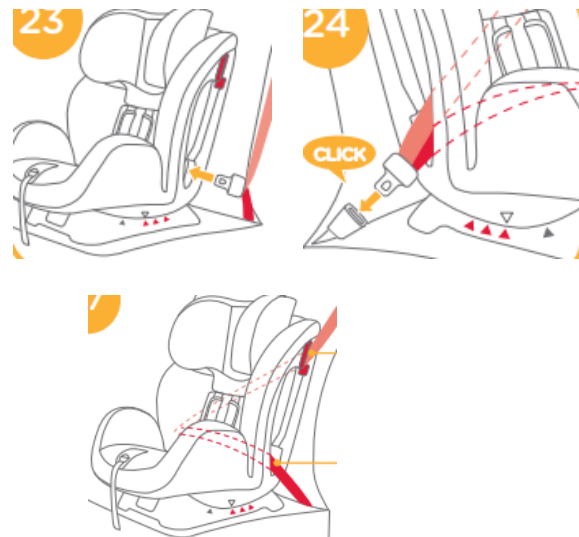
0/0+
Up to 83cm
0-13kg

Installed rear facing with adult 3-point seat belt and locking clip

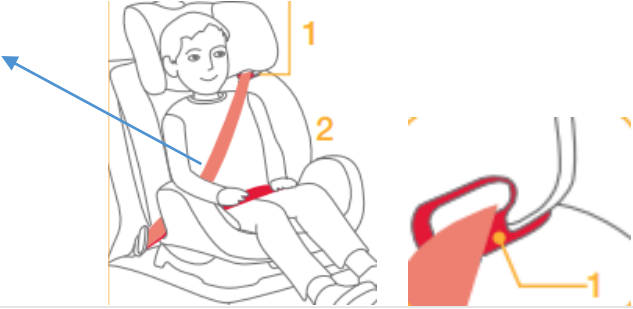


1
71cm and above
9-18kg

Installed forward facing with adult 3-point seat belt and integrated lock-off clip. Can also be installed rear facing until 18kg.



CHILD RESTRAINT SYSTEM INFORMATION

<p>2 100cm and above 15-25kg</p>	<p>Installed forward facing with adult 3-point seat belt</p> 
<p>3 Up to 135cm 22-36kg</p>	<p>N/A</p>