

CHILD RESTRAINT SYSTEM INFORMATION

MODEL **C1202 (STEADI)**

GROUP **0+ / 1**

BRAND **JOIE**



0260180

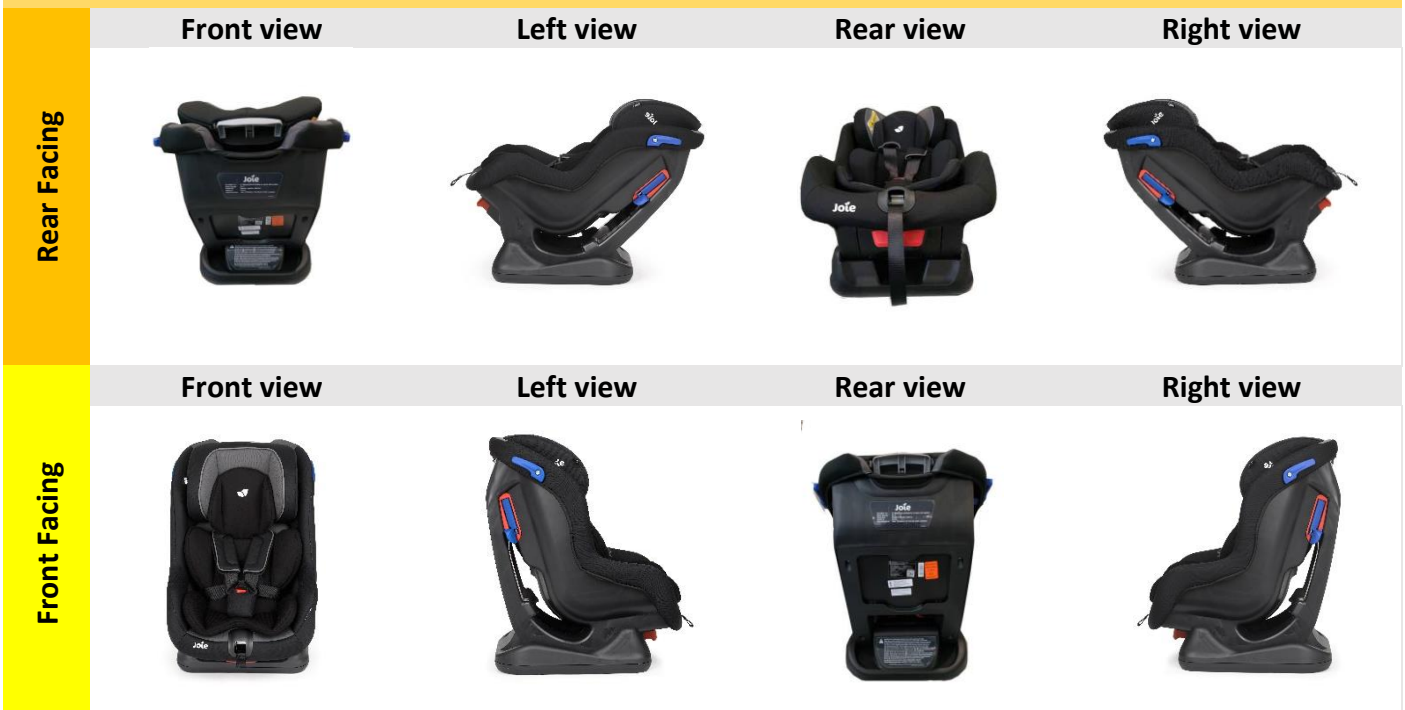
UNR TESTING INFORMATION

Regulation	ECE R44/04
Approval Number	44R-041510
CTA Reference Number	JPJ.BKA,600-3/3/33 Jld (56)(16)
CTA Approval Date	16 JANUARY 2020

INSTALLATION TYPE

Installation Type/ Direction	Seatbelt	ISOFIX	Top Tether	Support Leg
Rear Facing	✓	N/A	N/A	N/A
Forward Facing	✓	N/A	N/A	N/A

PHOTOS



CHILD RESTRAINT SYSTEM INFORMATION

COLOUR VARIANT

Merlot



Moonlight



Coal



Dark Pewter



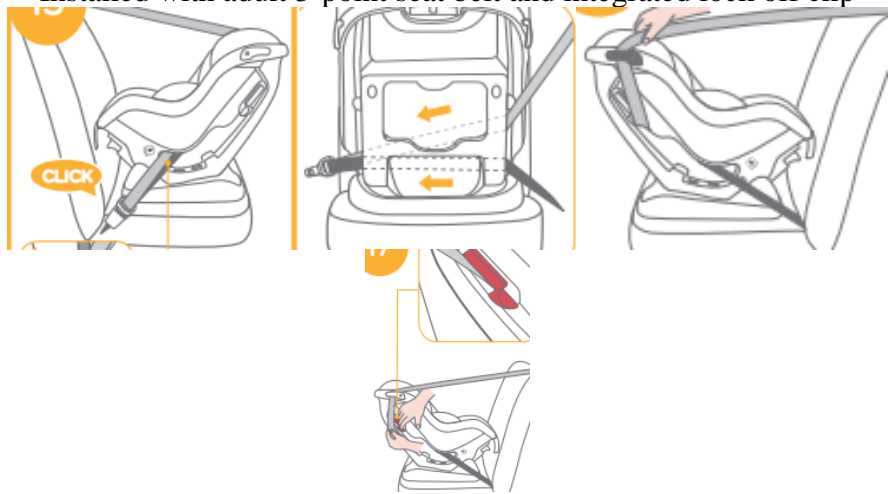
INSTALLATION

Group

Installation Method

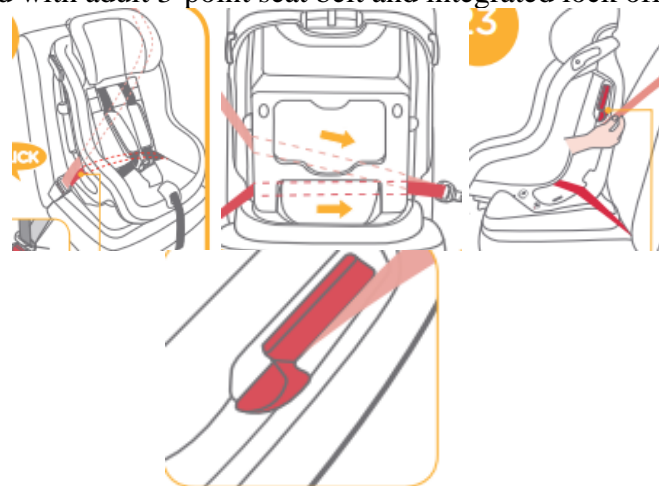
0/0+
Up to 83cm
0-13kg

Installed with adult 3-point seat belt and integrated lock off clip



1
71cm and above
9-18kg

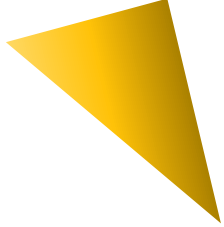
Installed with adult 3-point seat belt and integrated lock off clip



2
100cm and above
15-25kg

N/A

CHILD RESTRAINT SYSTEM INFORMATION



<p>3 Up to 135cm 22-36kg</p>	<p>N/A</p>
---	-------------------