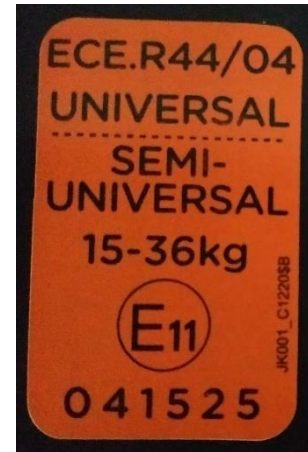


CHILD RESTRAINT SYSTEM INFORMATION

MODEL **C1220A**
(TRILLO/TRILLO LX)

GROUP **2 / 3**

BRAND **JOIE**



0260182


UNR TESTING INFORMATION

Regulation	ECE R44/04
Approval Number	44R-041525
CTA Reference Number	JPJ.BKA,600-3/3/33 Jld (56)(16)
CTA Approval Date	16 JANUARY 2020

INSTALLATION TYPE

Installation Type/ Direction	Seatbelt	ISOFIX	Top Tether	Support Leg
Rear Facing	N/A	N/A	N/A	N/A
Forward Facing	✓	✓	N/A	N/A

PHOTOS

	Front view	Left view	Rear view	Right view
Rear Facing	N/A	N/A	N/A	N/A
Front Facing				

CHILD RESTRAINT SYSTEM INFORMATION

COLOUR VARIANT

Dark Pewter



Ember



INSTALLATION

Group

Installation Method

0/0+
Up to 83cm
0-13kg

N/A

1
71cm and above
9-18kg

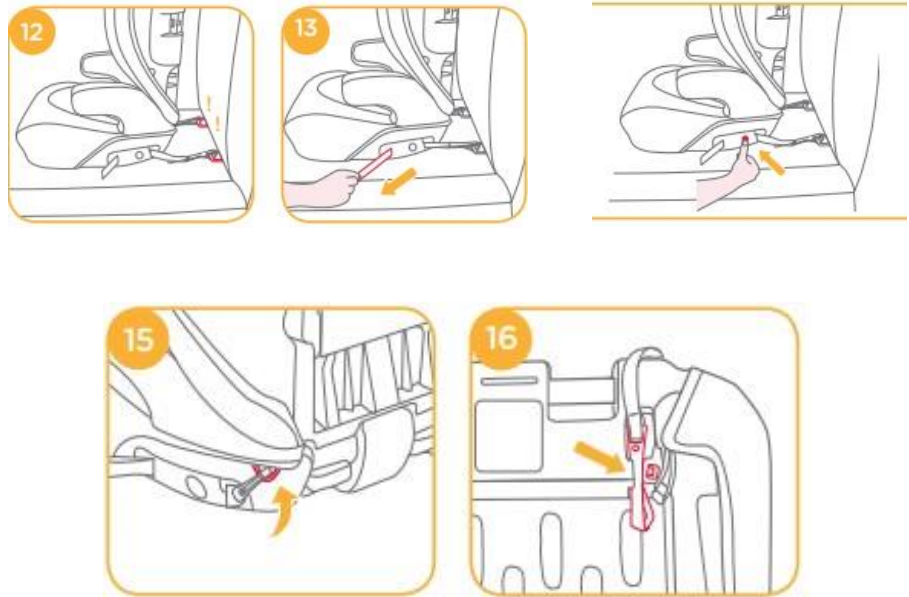
N/A

CHILD RESTRAINT SYSTEM INFORMATION

Installed forward facing with adult 3-point seat belt



Or installed forward facing with Isofix



2
100cm and above
15-25kg

3
Up to 135cm
22-36kg

Installed with vehicle 3-point seat belt, same as Group 2