

CHILD RESTRAINT SYSTEM INFORMATION

MODEL **C1602**
(EVERY STAGE FX)

GROUP **0+ / 1 / 2 / 3**

BRAND **JOIE**



0260184

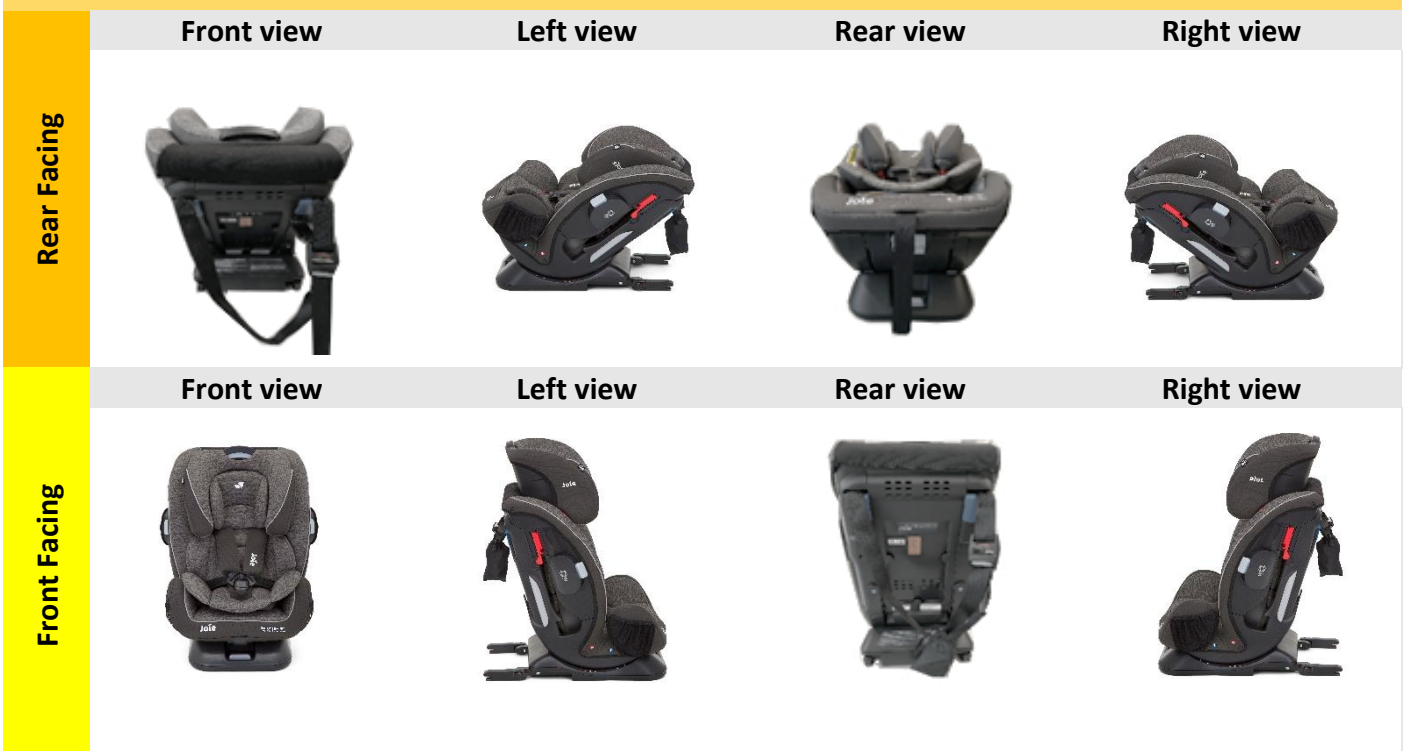
UNR TESTING INFORMATION

Regulation	ECE R44/04
Approval Number	E11 44R-041634
CTA Reference Number	JPJ.BKA,600-3/3/33 Jld (56)(16)
CTA Approval Date	16 JANUARY 2020

INSTALLATION TYPE

Installation Type/ Direction	Seatbelt	ISOFIX	Top Tether	Support Leg
Rear Facing	✓	N/A	N/A	N/A
Forward Facing	✓	✓	✓	N/A

PHOTOS



CHILD RESTRAINT SYSTEM INFORMATION

COLOUR VARIANT

Dark Pewter

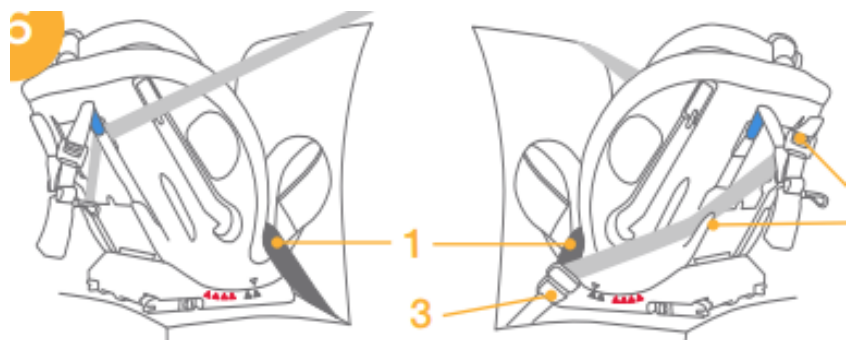
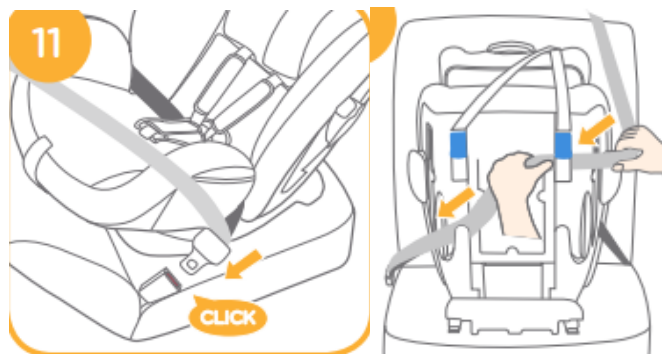


INSTALLATION

Group

Installation Method

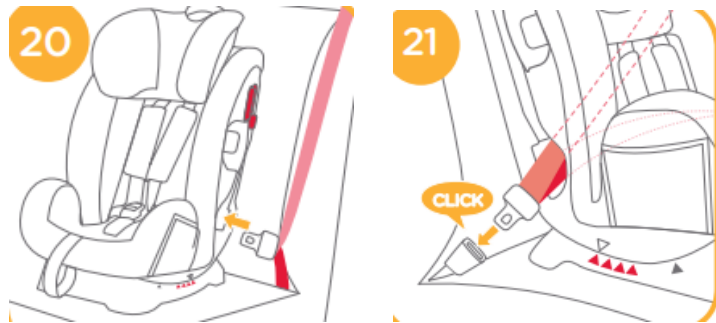
Installed rear facing with vehicle 3-point seat belt from 0-18kg



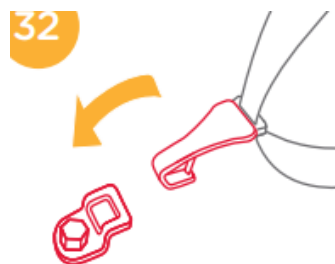
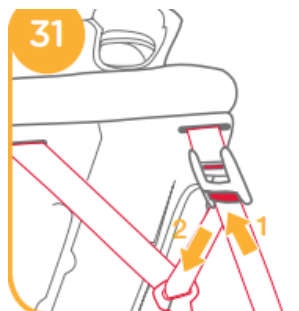
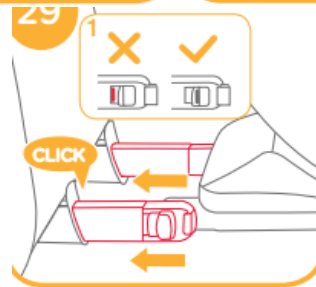
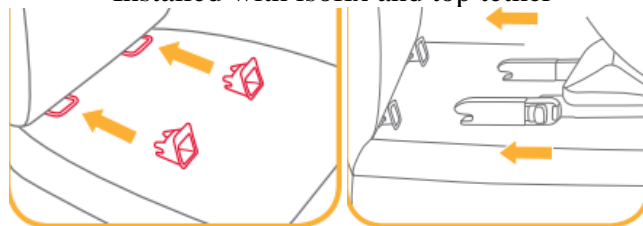
0/0+
Up to 83cm
0-13kg

CHILD RESTRAINT SYSTEM INFORMATION

Installed with vehicle 3-point seat belt

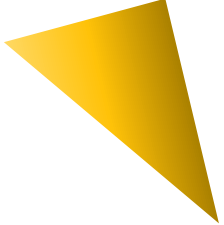


Installed with isofix and top tether



1
71cm and above
9-18kg

CHILD RESTRAINT SYSTEM INFORMATION

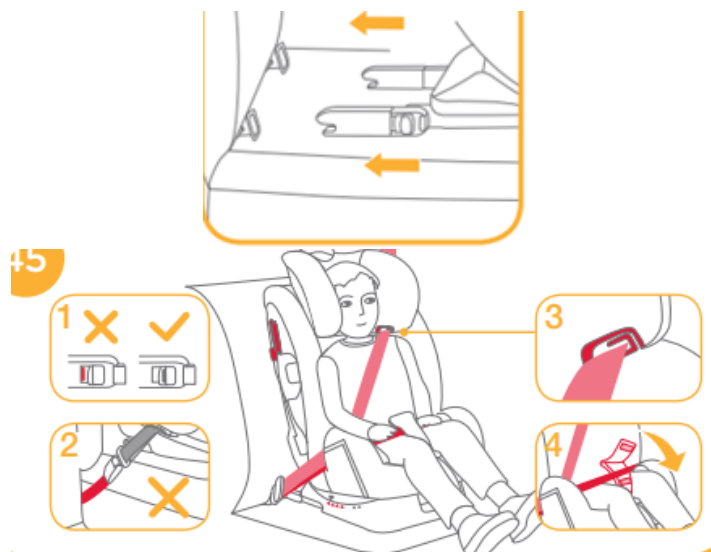


2
100cm and above
15-25kg

Installed with vehicle 3-point seat belt



Installed with 3-point belt and isofix



3
Up to 135cm
22-36kg

Installed with vehicle 3-point seat belt, same as Group 2
Installed with 3-point belt and isofix same as Group 2