

CHILD RESTRAINT SYSTEM INFORMATION

MODEL **I1507**
(STAGES ISOFIX)

GROUP **0+ / 1 / 2**

BRAND **JOIE**



0260186

UNR TESTING INFORMATION

Regulation	ECE R44/04
Approval Number	E11 44R-041635
CTA Reference Number	JPJ.BKA,600-3/3/33 Jld (56)(16)
CTA Approval Date	16 JANUARY 2020

INSTALLATION TYPE

Installation Type/ Direction	Seatbelt	ISOFIX	Top Tether	Support Leg
Rear Facing	N/A	✓	N/A	✓
Forward Facing	✓	✓	N/A	✓

PHOTOS



CHILD RESTRAINT SYSTEM INFORMATION

COLOUR VARIANT

Pavement

Navy Blazer



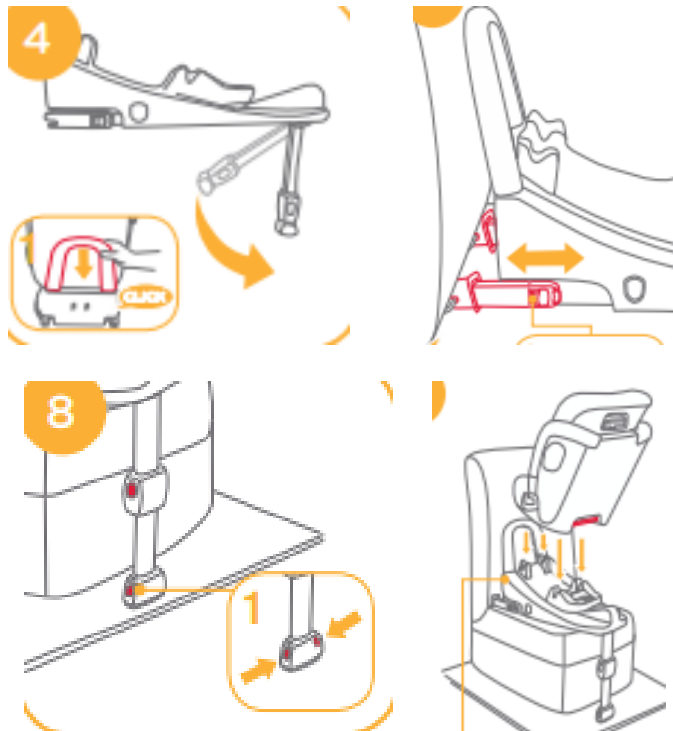
INSTALLATION

Group

Installation Method

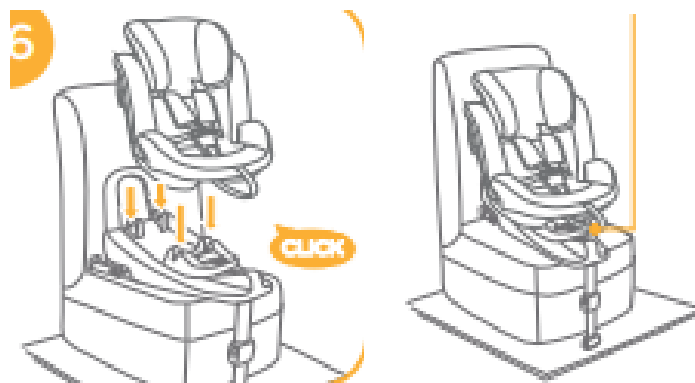
0/0+
Up to 83cm
0-13kg

Installed rear facing with isofix base and load leg, 0-18kg



Installed forward facing with isofix base and load leg

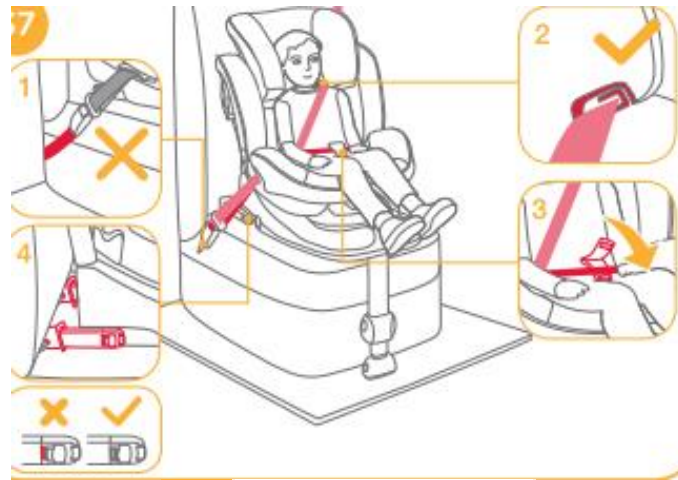
1
71cm and above
9-18kg



CHILD RESTRAINT SYSTEM INFORMATION

Installed forward facing with isofix base, load leg and 3-point belt

2
100cm and above
15-25kg



3
Up to 135cm
22-36kg

N/A